



Mains Distribution Guide

V32 - Q1 2026

For any queries, please contact hiredesk@tsllighting.com

TSL Lighting Ltd. Gateway House, Bilton Road, Kingsland Business Park, Basingstoke, RG24 8LJ

[+44 \(0\)20 8629 2025](tel:+44(0)2086292025) hiredesk@tsllighting.com www.tsllighting.com



Contents

| | |
|--------------------------|-----|
| e-Contents | 4 |
| Naming Convention | 5 |
| Styles | 5 |
| Single Phase Distros | 6 |
| Three Phase Distros | 40 |
| Hot Power Soca | 104 |
| Hybrid Dimmer-Distro | 143 |
| Reference Section | |
| Mains Calculations | 153 |
| Cable Guide | 155 |
| Variable RCDs | 158 |

e-Contents

When viewing this document on an electronic device, the links below will allow you to quickly jump to information about a specific unit.

| <u>Single Phase</u> | <u>Three Phase</u> | <u>Hot Power Soca</u> |
|-----------------------------|-----------------------------|---|
| <u>111</u> | <u>1312</u> | <u>312</u> <u>3313</u> <u>3121</u> <u>HP18</u> <u>HP42a</u> |
| <u>112</u> | <u>161</u> | <u>331</u> <u>361</u> <u>3122</u> <u>HP18a</u> <u>HP42d</u> |
| <u>113</u> | <u>162</u> | <u>332</u> <u>362</u> <u>3123</u> <u>HP18b</u> <u>HP48</u> |
| <u>114</u> | <u>163</u> | <u>332a</u> <u>364</u> <u>3123a</u> <u>HP18c</u> <u>HP48a</u> |
| <u>115</u> | <u>164</u> | <u>332b</u> <u>365</u> <u>3123b</u> <u>HP18d</u> <u>HP72</u> |
| <u>116</u> | <u>165</u> | <u>333</u> <u>366</u> <u>3124</u> <u>HP18e</u> <u>HP72a</u> |
| <u>117</u> | <u>166</u> | <u>333a</u> <u>367</u> <u>3126</u> <u>HP18h</u> <u>HP72b</u> |
| <u>118</u> | <u>167</u> | <u>334</u> <u>367a</u> <u>3129</u> <u>HP18i</u> <u>HP72c</u> |
| <u>132</u> | <u>168</u> | <u>334a</u> <u>368</u> <u>3P1</u> <u>HP36b</u> <u>HP72e</u> |
| <u>133</u> | <u>1610</u> | <u>335</u> <u>369</u> <u>3P4</u> <u>HP36c</u> <u>HP72f</u> |
| <u>134</u> | <u>1611</u> | <u>336</u> <u>369a</u> <u>3P6</u> <u>HP36d</u> <u>HP72a</u> |
| <u>135</u> | <u>1121</u> | <u>336b</u> <u>3610</u> <u>3P6a</u> <u>HP42</u> |
| <u>136</u> | <u>1122</u> | <u>337</u> <u>3612</u> <u>3P7</u> |
| <u>137</u> | | <u>337a</u> <u>3613</u> <u>3P7a</u> |
| <u>138</u> | | <u>338</u> <u>3614</u> <u>3P8</u> <u>HPD24</u> <u>HPD60</u> |
| <u>139</u> | | <u>338a</u> <u>3615</u> <u>3P9</u> |
| <u>1310</u> | | <u>339</u> <u>3616</u> |
| <u>1311</u> | | <u>3312</u> <u>3617</u> |

Dimmer-Distro

Naming convention

TSL distros are named in a manner that provides some information about the input and output capabilities of the unit. Each name consists of 3 (or occasionally 4) characters.

x



Input phasing

- "1" - Single phase
- "3" - Three phase

y



Input type

- "1" - 16A
- "3" - 32A
- "6" - 63A
- "12" - 125A
- "P" - Powerlock

z



Counter

- Used simply to denote which variant of the product line

Styles

TSL distros are categorised into one of four styles:

- 1. Rubber box:** A small, free-standing unit with a rubber based exterior and (often) a handle on top, suitable for outdoor use.
- 2. HDPE:** A slightly larger unit constructed of hardwearing plastic with integrated side handles.
- 3. Rack mount:** Suitable for mounting in standard sized 19-inch rack unit enclosures.
- 4. Flightcase:** A complete unit, permanently installed into a single flight case; often the largest units in our range.

Single Phase



18H
tsl
SWL100Kg

18H
tsl
SWL100Kg

18H
tsl
SWL100Kg

Use with
MAX
650W
lamps

MAX

PHILIPS Sele

Type 111

Style: Rubber Box

| | <u>Connection/Type</u> | <u>Quantity</u> | <u>Protection</u> |
|----------|------------------------|-----------------|-------------------------------|
| Input: | 16A / 1 | 1 | - |
| Output: | 13A / 1 | 14 | 16A C-type 30mA RCBO x1 |
| Through: | 16A / 1 | 1 | - |
| Notes: | - | | |



Type 112

Style: Rubber Box

| | <u>Connection/Type</u> | <u>Quantity</u> | <u>Protection</u> |
|----------|------------------------|-----------------|-------------------|
| Input: | 16A / 1 | 1 | - |
| Output: | 13A / 1 | 6 | - |
| Through: | 16A / 1 | 1 | - |
| Notes: | - | | |



Type 113

Style: Rubber Box

| | <u>Connection/Type</u> | <u>Quantity</u> | <u>Protection</u> |
|----------|------------------------|-----------------|-------------------|
| Input: | 16A / 1 | 1 | - |
| Output: | 16A / 1 | 4 | - |
| Through: | - | - | - |
| Notes: | - | | |



Type 114

Style: Rubber Box

| | <u>Connection/Type</u> | <u>Quantity</u> | <u>Protection</u> |
|----------|------------------------|-----------------|-------------------|
| Input: | True1 | 1 | - |
| Output: | 13A / 1 | 8 | - |
| Through: | True1 | - | - |
| Notes: | - | | |



Type 115

Style: Rubber Box

| | <u>Connection/Type</u> | <u>Quantity</u> | <u>Protection</u> |
|----------|------------------------|-----------------|----------------------------|
| Input: | True1 | 1 | - |
| Output: | 13A / 1 | 8 | 16A C-Type 30mA RCBO x1 |
| Through: | True1 | - | - |
| Notes: | - | | |



Type 116

Style: Rubber Box

| | <u>Connection/Type</u> | <u>Quantity</u> | <u>Protection</u> |
|----------|------------------------|-----------------|----------------------------|
| Input: | 16A/1 | 1 | - |
| Output: | 16A/1 | 1 | 16A C-Type 30mA RCBO x1 |
| Through: | - | - | - |
| Notes: | - | | |



Type 117

Style: 2u Rack Mount

| | <u>Connection/Type</u> | <u>Quantity</u> | <u>Protection</u> |
|----------|--|-----------------|-------------------|
| Input: | 16A/1 | 1 | - |
| Output: | 13A/1 | 5 | - |
| Through: | 16A/1 | 1 | - |
| Notes: | 1x 13A/1 on rear of unit Can be mounted in standard 19" Rack Case | | |



Type 118

Style: Cased

| | <u>Connection/Type</u> | <u>Quantity</u> | <u>Protection</u> |
|----------|--|-----------------|-------------------|
| Input: | 16A/1 | 1 | - |
| Output: | 13A/1 | 8 | - |
| Through: | 16A/1 | 1 | - |
| Notes: | Has indicator lights to show correct input configuration | | |



Type 132

Style: Rubber Box

| | <u>Connection/Type</u> | <u>Quantity</u> | <u>Protection</u> |
|----------|------------------------|-----------------|----------------------------|
| Input: | 32A / 1 | 1 | - |
| Output: | 16A / 1 | 8 | 16A C-type 30mA RCBO x8 |
| Through: | - | - | - |
| Notes: | - | | |



Type 133

Style: Rubber Box

| | <u>Connection/Type</u> | <u>Quantity</u> | <u>Protection</u> |
|----------|------------------------|-----------------|-------------------------|
| Input: | 32A / 1 | 1 | 32A C-type 30mA RCBO |
| Output: | 13A / 1 | 14 | - |
| Through: | - | - | - |
| Notes: | - | | |



Type 134

Style: Rubber Box

| | <u>Connection/Type</u> | <u>Quantity</u> | <u>Protection</u> |
|----------|------------------------|-----------------|-------------------------|
| Input: | 32A / 1 | 1 | 32A C-type 30mA RCBO |
| Output: | 16A / 1 | 6 | 16A C-Type MCB x6 |
| Through: | - | - | - |
| Notes: | - | | |



Type 135

Style: Rubber Box

| | <u>Connection/Type</u> | <u>Quantity</u> | <u>Protection</u> |
|----------|------------------------|-----------------|----------------------|
| Input: | 32A / 1 | 1 | - |
| Output: | 16A / 1 | 4 | 16A C-Type MCB x2 |
| Through: | - | - | - |
| Notes: | - | | |



Type 136

Style: Rubber Box

| | <u>Connection/Type</u> | <u>Quantity</u> | <u>Protection</u> |
|----------|------------------------|-----------------|----------------------|
| Input: | 32A / 1 | 1 | - |
| Output: | 16A / 1 | 4 | 16A C-Type MCB x4 |
| Through: | - | - | - |
| Notes: | - | | |



Type 137

Style: Rubber Box

| | <u>Connection/Type</u> | <u>Quantity</u> | <u>Protection</u> |
|----------|------------------------|-----------------|-------------------------|
| Input: | 32A / 1 | 1 | 32A C-Type 30mA RCBO |
| Output: | 16A / 1 | 4 | 16A C-Type MCB x4 |
| Through: | - | - | - |
| Notes: | | - | |



Type 138

Style: Rubber Box

| | <u>Connection/Type</u> | <u>Quantity</u> | <u>Protection</u> |
|----------|------------------------|-----------------|-------------------------|
| Input: | 32A / 1 | 1 | - |
| Output: | 32A / 1 | 1 | 32A C-Type 30mA RCBO |
| Through: | - | - | - |
| Notes: | - | | |



Type 139

Style: Rubber Box

| | <u>Connection/Type</u> | <u>Quantity</u> | <u>Protection</u> |
|----------|------------------------|-----------------|----------------------------|
| Input: | 32A / 1 | 1 | - |
| Output: | True1 | 8 | 16A B-Type 30mA RCBO x8 |
| Through: | - | - | - |
| Notes: | - | | |



Type 1310

Style: Rubber Box

| | <u>Connection/Type</u> | <u>Quantity</u> | <u>Protection</u> |
|---------|------------------------|-----------------|----------------------------|
| Input: | 32A / 1 | 1 | - |
| Output: | 16A / 1 | 4 | 16A C-Type 30mA RCBO x4 |
| Notes: | - | | |



Type 1311

Style: Rubber Box

| | <u>Connection/Type</u> | <u>Quantity</u> | <u>Protection</u> |
|---------|------------------------|-----------------|-------------------------|
| Input: | 32A / 1 | 1 | - |
| Output: | 32A / 1 | 1 | 16A B-Type 30mA RCBO |
| Notes: | - | | |



Type 1312

Style: Rubber Box

| | <u>Connection/Type</u> | <u>Quantity</u> | <u>Protection</u> |
|---------|------------------------|-----------------|---|
| Input: | 32A / 1 | 1 | - |
| Output: | 32A / 1 | 1 | 32A C-type MCB & Variable/ Switchable RCD |
| Notes: | - | | |



Type 161

Style: HDPE

| | <u>Connection/Type</u> | <u>Quantity</u> | <u>Protection</u> |
|----------|------------------------|-----------------|----------------------------|
| Input: | 63A / 1 | 1 | - |
| Output: | 32A / 1 | 2 | 32A C-type 30mA RCBO x6 |
| | 16A / 1 | 6 | 16A C-type 30mA RCBO x6 |
| Through: | 63A / 1 | 1 | - |
| Notes: | | - | |



Type 162

Style: Rubber Box

| | <u>Connection/Type</u> | <u>Quantity</u> | <u>Protection</u> |
|----------|------------------------|-----------------|------------------------------|
| Input: | 63A / 1 | 1 | 63A D-Type MCB & 30mA RCD |
| Output: | 16A / 1 | 8 | 16A C-Type MCB x8 |
| Through: | - | - | - |
| Notes: | - | | |



Type 163

Style: Rubber Box

| | <u>Connection/Type</u> | <u>Quantity</u> | <u>Protection</u> |
|----------|------------------------|-----------------|----------------------------|
| Input: | 63A / 1 | 1 | 63A C-Type MCB |
| Output: | 63A / 1 | 1 | 63A C-Type 30mA RCBO x2 |
| | 32A / 1 | 2 | 32A C-Type 30mA RCBO x2 |
| | 16A / 1 | 4 | 16A C-Type 30mA RCBO x4 |
| Through: | - | - | - |
| Notes: | - | | |



Type 164

Style: Rubber Box

| | <u>Connection/Type</u> | <u>Quantity</u> | <u>Protection</u> |
|----------|------------------------|-----------------|----------------------------|
| Input: | 63A / 1 | 1 | 63A C-Type MCB |
| Output: | Socapex | 2 (Paired) | 16A C-Type 30mA RCBO x6 |
| Through: | - | - | - |
| Notes: | - | | |



Type 165

Style: Rubber Box

| | <u>Connection/Type</u> | <u>Quantity</u> | <u>Protection</u> |
|----------|------------------------|-----------------|----------------------------|
| Input: | 63A / 1 | 1 | - |
| Output: | 32A / 1 | 2 | 32A C-Type 30ma RCBO x2 |
| Through: | - | - | - |
| Notes: | - | | |



Type 166

Style: Rubber Box

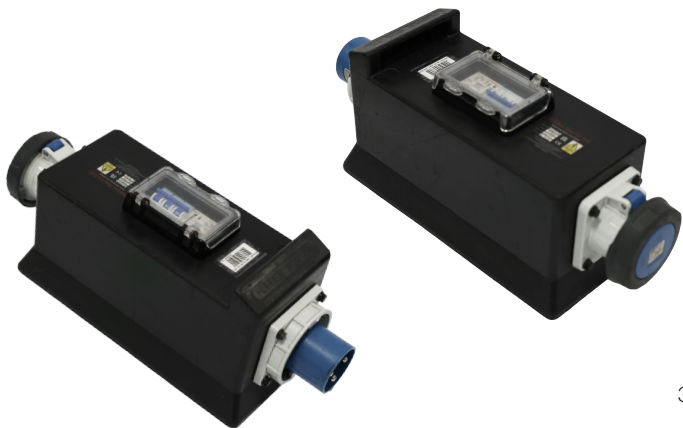
| | <u>Connection/Type</u> | <u>Quantity</u> | <u>Protection</u> |
|----------|---|-----------------|----------------------------|
| Input: | 63A/1 | 1 | 63A C-Type MCB |
| Output: | 32A/1 | 3 | 32A C-Type 30ma RCBO x3 |
| | 16A/1 | 6 | 16A C-Type 30ma RCBO x6 |
| | Socapex | 1 | See Above- |
| Through: | 63A/1 | 1 | - |
| Notes: | The Socapex and 16A outputs are paired across this output | | |



Type 167

Style: Rubber Box

| | <u>Connection/Type</u> | <u>Quantity</u> | <u>Protection</u> |
|----------|------------------------|-----------------|---|
| Input: | 63A/1 | 1 | - |
| Output: | 63A/1 | 1 | 63A C-type MCB & Variable/ Switchable RCD |
| Through: | - | - | - |
| Notes: | - | | |



Type 168

Style: Rubber Box

| | <u>Connection/Type</u> | <u>Quantity</u> | <u>Protection</u> |
|----------|------------------------|-----------------|-------------------|
| Input: | 63A/1 | 1 | - |
| Output: | 32A/1 | 2 | 16A B-Type MCB |
| Through: | - | - | - |
| Notes: | - | | |



Type 1610

Style: Rubber Box

| | <u>Connection/Type</u> | <u>Quantity</u> | <u>Protection</u> |
|----------|------------------------|-----------------|------------------------------|
| Input: | 63A/1 | 1 | 63A C-type MCB & 30mA RCD |
| Output: | 32A/1 | 4 | 32A C-Type MCB |
| | 16A/1 | 4 | 16A C-Type MCB |
| Through: | - | - | - |
| Notes: | | - | |



Type 1611

Style: Rubber Box

| | <u>Connection/Type</u> | <u>Quantity</u> | <u>Protection</u> |
|----------|---|-----------------|----------------------|
| Input: | 63A/1 | 1 | |
| Output: | 16A/1 | 6 | 16A C-Type 30mA RCBO |
| | 13A/1 | 4 | - |
| | Socapex | 1 | - |
| Through: | - | - | - |
| Notes: | The Socapex and 16A outputs are paired across this output | | |



Type 1121

Style: Rubber Box

| | <u>Connection/Type</u> | <u>Quantity</u> | <u>Protection</u> |
|---------|------------------------|-----------------|-----------------------|
| Input: | 125A / 1 | 1 | - |
| Output: | 63A / 1 | 2 | 63A C-type MCB x 2 |
| Notes: | | - | |



Type 1122

Style: Rubber Box

| | <u>Connection/Type</u> | <u>Quantity</u> | <u>Protection</u> |
|---------|------------------------|-----------------|--|
| Input: | 125A / 1 | 1 | - |
| Output: | 125A / 1 | 1 | 125A C-type MCB & Variable/ Switchable RCD |
| Notes: | | - | |







Three Phase



Type 312

Style: HDPE

| | <u>Connection/Type</u> | <u>Quantity</u> | <u>Protection</u> |
|---------|------------------------|-----------------|-------------------|
| Input: | 16A / 3 | 1 | - |
| Output: | 16A / 3 | 1 | 100mA RCD |
| Notes: | | | |



Type 331

Style: Rubber box / HDPE

| | <u>Connection/Type</u> | <u>Quantity</u> | <u>Protection</u> |
|----------|---|-----------------|----------------------------|
| Input: | 32A / 3 | 1 | - |
| Output: | 32A / 1 | 3 | 32A C-type 30mA RCBO x3 |
| Through: | 32A / 3 | 1 | - |
| Notes: | 1 outlet per phase, stickered on the individual sockets | | |



Type 332

Style: Rubber box / HDPE

| | <u>Connection/Type</u> | <u>Quantity</u> | <u>Protection</u> |
|---------|---|-----------------|----------------------------|
| Input: | 32A / 3 | 1 | - |
| Output: | 16A / 1 | 6 | 16A C-Type 30mA RCBO x6 |
| Notes: | Sockets are phased L1, L2, L3 (x2) and stickered accordingly | | |



Type 332a

Style: Rubber box / HDPE

| | <u>Connection/Type</u> | <u>Quantity</u> | <u>Protection</u> |
|---------|---|-----------------|----------------------|
| Input: | 32A / 3 | 1 | 30mA RCD |
| Output: | 16A / 1 | 6 | 16a C-Type MCB x6 |
| Notes: | Sockets are phased L1, L2, L3 (x2) and stickered accordingly | | |



Type 332b

Style: Rubber box / HDPE

| | <u>Connection/Type</u> | <u>Quantity</u> | <u>Protection</u> |
|---------|---|-----------------|----------------------------|
| Input: | 32A / 3 | 1 | - |
| Output: | 16A / 1 | 6 | 16A C-Type 30mA RCBO x6 |
| Notes: | Sockets are phased L1, L2, L3 (x2) and stickered accordingly | | |



Type 333

Style: Rubber box

| | <u>Connection/Type</u> | <u>Quantity</u> | <u>Protection</u> |
|---------|---|-----------------|----------------------------|
| Input: | 32A / 3 | 1 | - |
| Output: | 32A / 1 | 3 | 32A C-type 30mA RCBO x3 |
| Notes: | 1 output per phase, stickered on breakers | | |



Type 333a

Style: Rubber box

| | <u>Connection/Type</u> | <u>Quantity</u> | <u>Protection</u> |
|---------|--|-----------------|-------------------|
| Input: | 32A / 3 | 1 | - |
| Output: | 32A / 1 | 3 | UnProtected- |
| Notes: | 1 output per phase, stickered on outputs | | |



Type 334

Style: Rubber box

| | <u>Connection/Type</u> | <u>Quantity</u> | <u>Protection</u> |
|----------|------------------------|-----------------|----------------------------|
| Input: | 32A / 3 | 1 | - |
| Output: | 16A / 1 | 6 | 16A C-type 30mA RCBO x6 |
| Through: | 32A / 3 | 1 | - |



Type 334a

Style: Rubber box

| | <u>Connection/Type</u> | <u>Quantity</u> | <u>Protection</u> |
|----------|------------------------|-----------------|----------------------------|
| Input: | 32A / 3 | 1 | - |
| Output: | True1 | 6 | 16A C-type 30mA RCBO x6 |
| Through: | 32A / 3 | 1 | - |



Type 335

Style: Rubber box

| | <u>Connection/Type</u> | <u>Quantity</u> | <u>Protection</u> |
|----------|------------------------|-----------------|----------------------------|
| Input: | 32A / 3 | 1 | 32A C-Type MCB |
| Output: | 16A / 1 | 6 | 16A C-Type 30mA RCBO x6 |
| Through: | 32A / 3 | 1 | - |



Type 336

Style: Rubber box

| | <u>Connection/Type</u> | <u>Quantity</u> | <u>Protection</u> |
|---------|------------------------|-----------------|-------------------|
| Input: | 32A / 3 | 1 | - |
| Output: | 16A / 3 (4 pin) | 2 | 16A C-Type MCB |
| Notes: | Motor Distro | | |



Type 336b

Style: HDPE

| | <u>Connection/Type</u> | <u>Quantity</u> | <u>Protection</u> |
|---------|--|-----------------|-------------------|
| Input: | 32A / 3 | 1 | - |
| Output: | 16A / 3 (4 pin) | 4 | tbc |
| Notes: | Motor Distro. Features phase indication LEDs and the ability to phase reverse by rotating/swapping pins in the input connector | | |



Type 337

Style: Rubber box

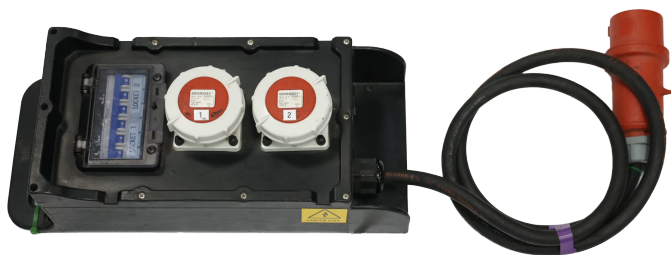
| | <u>Connection/Type</u> | <u>Quantity</u> | <u>Protection</u> |
|---------|------------------------|-----------------|----------------------------|
| Input: | 32A / 3 | 1 | - |
| Output: | 16A / 3 | 2 | 16A C-type 30mA RCBO x2 |
| Notes: | | | |



Type 337a

Style: Rubber box

| | <u>Connection/Type</u> | <u>Quantity</u> | <u>Protection</u> |
|---------|------------------------|-----------------|----------------------|
| Input: | 32A / 3 | 1 | - |
| Output: | 16A / 3 | 2 | 16a C-Type MCB x2 |
| Notes: | | | |



Type 338

Style: HDPE

| | <u>Connection/Type</u> | <u>Quantity</u> | <u>Protection</u> |
|---------|------------------------|-----------------|---|
| Input: | 32A / 3 | 1 | - |
| Output: | 32A / 3 | 1 | 32A C-type MCB & Variable/ Switchable RCD |
| Notes: | - | | |



Type 338a

Style: Rubber box

| | <u>Connection/Type</u> | <u>Quantity</u> | <u>Protection</u> |
|---------|------------------------|-----------------|-------------------------|
| Input: | 32A / 3 | 1 | - |
| Output: | 32A / 3 | 1 | 32A C-Type 30mA RCBO |
| Notes: | | | |



Type 339

Style: Rubber box

| | <u>Connection/Type</u> | <u>Quantity</u> | <u>Protection</u> |
|---------|------------------------|-----------------|----------------------------|
| Input: | 32A / 3 | 1 | - |
| Output: | True1 | 6 | 16A B-Type 30mA RCBO x6 |
| Notes: | | - | |



Type 3312

Style: Rubber box

| | <u>Connection/Type</u> | <u>Quantity</u> | <u>Protection</u> |
|---------|--|-----------------|----------------------------|
| Input: | 32A / 3 | 1 | - |
| Output: | 16A/1 | 6 | 16A C-Type 30mA RCBO x6 |
| | 32A/1 | 3 | 32A C-Type 30mA RCBO x3 |
| | 32A/3 | 1 | 32A C-Type MCB |
| Notes: | This unit has an External Earthing Point | | |



Type 3313

Style: Rubber box

| | <u>Connection/Type</u> | <u>Quantity</u> | <u>Protection</u> |
|---------|--|-----------------|----------------------------|
| Input: | 32A / 3 | 1 | - |
| Output: | 16A/1 | 6 | 16A C-Type 30mA RCBO x6 |
| | Socapex | 1 | - |
| Notes: | The Socapex and 16A outputs are paired across outputs 1-6. | | |



Type 361

Style: HDPE

| | <u>Connection/Type</u> | <u>Quantity</u> | <u>Protection</u> |
|----------|------------------------|-----------------|---------------------------------|
| Input: | 63A / 3 | 1 | - |
| Output: | 63A / 1 | 3 | C-Type MCB & Variable RCD x3 |
| Through: | 63A / 3 | 1 | - |
| Notes: | 1 outlet per phase | | |



Type 362

Style: HDPE

| | <u>Connection/Type</u> | <u>Quantity</u> | <u>Protection</u> |
|---------|--|-----------------|-------------------------|
| Input: | 63A / 3 | 1 | - |
| Output: | 32A / 1 | 6 | 30mA 32A C-type RCBO |
| Notes: | 2 outputs per phase, stickered accordingly on the sockets. This distro also features an earthing point | | |



Type 364

Style: HDPE

| | <u>Connection/Type</u> | <u>Quantity</u> | <u>Protection</u> |
|---------|------------------------|-----------------|---|
| Input: | 63A / 3 | 1 | - |
| Output: | 63A / 3 | 1 | 63A C-type MCB & Variable/ Switchable RCD |



Type 365

Style: Rubber box

| | <u>Connection/Type</u> | <u>Quantity</u> | <u>Protection</u> |
|---------|------------------------|-----------------|-------------------|
| Input: | 63A / 3 | 1 | - |
| Output: | 63A / 3 | 1 | 63A C-Type MCB |



Type 366

Style: Rubber box

| | <u>Connection/Type</u> | <u>Quantity</u> | <u>Protection</u> |
|---------|------------------------|-----------------|------------------------------|
| Input: | 63A / 3 | 1 | - |
| Output: | 63A / 3 | 2 | 63A C-Type MCB & 30mA RCD |



Type 367

Style: Rubber box

| | <u>Connection/Type</u> | <u>Quantity</u> | <u>Protection</u> |
|---------|--|-----------------|-----------------------------|
| Input: | 63A / 3 | 1 | 63A C-Type MCB |
| Output: | 32A / 1 | 3 | 32A C-Type 30mA RCBO x3 |
| | 16A / 1 | 12 | 16A C-Type 30mA RCBO x12 |
| Notes: | Phasing is stickered on sockets, with 1x 32A/1 and 4x 16A per phase | | |



Type 367a

Style: HDPE

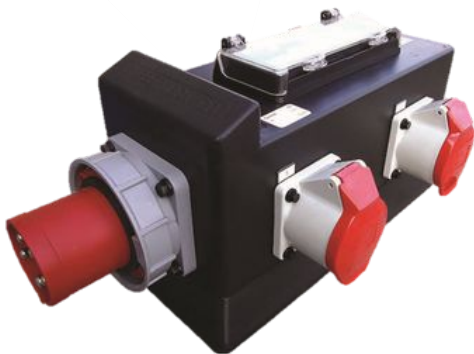
| | <u>Connection/Type</u> | <u>Quantity</u> | <u>Protection</u> |
|----------|--|-----------------|-----------------------------|
| Input: | 63A / 3 | 1 | 63A C-Type MCB |
| Output: | 32A / 1 | 3 | 32A C-Type 30mA RCBO x3 |
| | True1 | 12 | 16A C-Type 30mA RCBO x12 |
| Through: | 63A/3 | | |
| Notes: | Phasing is stickered on sockets, with 1x 32A/1 and 4x True1 per phase Features an earthing point | | |



Type 368

Style: Rubber box

| | <u>Connection/Type</u> | <u>Quantity</u> | <u>Protection</u> |
|---------|------------------------|-----------------|----------------------------|
| Input: | 63A / 3 | 1 | - |
| Output: | 32A / 3 | 2 | 32A C-Type 30mA RCBO x2 |



Type 369

Style: Rubber box

| | <u>Connection/Type</u> | <u>Quantity</u> | <u>Protection</u> |
|---------|------------------------|-----------------|---------------------------------------|
| Input: | 63A / 3 | 1 | - |
| Output: | 63A / 1 | 3 | 30mA RCD x3 & 63A D-Type MCB x3 |



Type 369a

Style: Rubber box

| | <u>Connection/Type</u> | <u>Quantity</u> | <u>Protection</u> |
|---------|------------------------|-----------------|---|
| Input: | 63A / 3 | 1 | 63A C-type MCB & Variable/ Switchable RCD |
| Output: | 63A / 1 | 3 | 63A C-Type MCB x3 |



Type 3610

Style: Rubber box

| | <u>Connection/Type</u> | <u>Quantity</u> | <u>Protection</u> |
|----------|------------------------|-----------------|---------------------------------------|
| Input: | 63A / 3 | 1 | - |
| Output: | 63A / 1 | 3 | 30mA RCD x3 & 63A C-Type MCB x3 |
| Through: | 63A / 3 | 1 | - |



Type 3612

Style: Rubber Box

| | <u>Connection/Type</u> | <u>Quantity</u> | <u>Protection</u> |
|---------|------------------------|-----------------|----------------------|
| Input: | 63A / 3 | 1 | |
| Output: | 32A / 3 | 2 | 32A C-Type MCB x2 |
| Notes: | Cable Input | | |



Type 3613

Style: Rubber Box

| | <u>Connection/Type</u> | <u>Quantity</u> | <u>Protection</u> |
|---------|---|-----------------|---------------------------------------|
| Input: | 63A / 3 | 1 | |
| Output: | 32A / 3 | 3 | 32A C-Type MCB with 30mA RCD x3 |
| Notes: | This Unit also has an external Earthing point | | |



Type 3614

Style: Rubber Box

| | <u>Connection/Type</u> | <u>Quantity</u> | <u>Protection</u> |
|---------|---|-----------------|--|
| Input: | 63A / 3 | 1 | * |
| Output: | 16A/1 | 6 | 16A C-Type 30mA RCBO x6 |
| | 16A/1 | 6 | 16A B-Type 30mA RCBO x6 |
| | 32A/1 | 6 | 32A C-Type 30mA RCBO x6 |
| | 32A/3 | 2 | 32A C-type MCB & Variable/ Switchable RCD x2 |
| Through | 63A/3 | 1 | - |
| Notes: | *100A switch disconnecter (3P+N) for mains isolation. This unit also has an external Earthing point. | | |

Type 3614

Style: Rubber Box



Type 3615

Style: Rubber Box

| | <u>Connection/Type</u> | <u>Quantity</u> | <u>Protection</u> |
|---------|---|-----------------|----------------------------|
| Input: | 63A / 3 | 1 | 63A C-Type MCB |
| Output: | 16A/1 | 6 | 16A C-Type 30mA RCBO x6 |
| | 32A/1 | 3 | 32A C-Type 30mA RCBO x3 |
| | 32A/1 | 3 | 32A C-Type MCB x3 |
| | 63A/1 | 3 | 63A MCB & Variable RCD |
| | 63A/3 | 1 | 63A C-type MCB |
| - | - | - | - |
| Notes: | This Unit also has an external Earthing point | | |

Type 3615

Style: Rubber Box



Type 3616

Style: Rubber Box

| | <u>Connection/Type</u> | <u>Quantity</u> | <u>Protection</u> |
|---------|---|-----------------|---|
| Input: | 63A / 3 | 1 | 63A C-Type MCB |
| Output: | 16A/1 | 12 | 16A C-Type 30mA RCBO x12 |
| | 32A/1 | 6 | 32A C-Type 30mA RCBO x3 32A C-Type MCB & variable RCD x3 |
| | 32A/3 | 1 | 32A C-Type MCB & variable RCD |
| Through | 63A/3 | 1 | - |
| Notes: | This Unit also has an external Earthing point | | |

Type 3616

Style: Rubber Box



Type 3617

Style: Rubber Box

| | <u>Connection/Type</u> | <u>Quantity</u> | <u>Protection</u> |
|---------|---|-----------------|----------------------------|
| Input: | 63A / 3 | 1 | |
| Output: | 16A/1 | 6 | 16A C-Type 30mA RCBO x6 |
| | 32A/1 | 3 | 32A C-Type 30mA RCBO x3 |
| | 32A/3 | 2 | 32A D-Type MCB x2 |
| Through | 63A/3 | 1 | - |
| Notes: | This Unit also has an external Earthing point | | |

Type 3617

Style: Rubber Box



Type 3121

Style: HDPE

| | <u>Connection/Type</u> | <u>Quantity</u> | <u>Protection</u> |
|----------|------------------------|-----------------|--|
| Input: | 125A / 3 | 1 | - |
| Output: | 63A / 3 | 2 | 63A C-Type MCB & Variable/ Switchable RCD x2 |
| | 32A / 3 | 2 | 32A C-Type MCB & Variable/ Switchable RCD x2 |
| Through: | 125A / 3 | 1 | - |



Type 3122

Style: Rubber box

| | <u>Connection/Type</u> | <u>Quantity</u> | <u>Protection</u> |
|---------|------------------------|-----------------|--|
| Input: | 125A / 3 | 1 | - |
| Output: | 125A / 3 | 1 | 125a C-Type MCB & Variable/ Switchable RCD |



Type 3123

Style: Rubber box

| | <u>Connection/Type</u> | <u>Quantity</u> | <u>Protection</u> |
|---------|------------------------|-----------------|--|
| Input: | 125A / 3 | 1 | - |
| Output: | 63A / 3 | 2 | 63A C-Type MCB & Variable/ Switchable RCD x2 |



Type 3123a

Style: Rubber box

| | <u>Connection/Type</u> | <u>Quantity</u> | <u>Protection</u> |
|---------|-----------------------------------|-----------------|--|
| Input: | 125A / 3 | 1 | 125a Switch disconnecter for isolation |
| Output: | 63A / 3 | 2 | 63A C-Type MCB & Variable/ Switchable RCD x2 |
| Notes | Included external earthing point. | | |



Type 3123b

Style: Rubber box

| | <u>Connection/Type</u> | <u>Quantity</u> | <u>Protection</u> |
|---------|---|-----------------|--|
| Input: | 125A / 3 | 1 | |
| Output: | 63A / 3 | 2 | 63A C-Type MCB & Variable/ Switchable RCD x2 |
| Notes | Includes external earthing point and power meter. | | |



Type 3124

Style: Rubber box

| | <u>Connection/Type</u> | <u>Quantity</u> | <u>Protection</u> |
|---------|--|-----------------|------------------------|
| Input: | 125A / 3 | 1 | 125A C-Type MCB |
| Output: | 16A/1 | 18 | 16A C-Type RCBO x18 |
| | 32A/1 | 6 | 32A C-Type RCBO x3 |
| | 32A/3 | 1 | 32A C-Type MCB |
| | 63A/3 | 1 | 63A C-Type MCB |
| | Socapex | 3 | * |
| Notes | *The Socapex and 16A outputs are paired across outputs 1>18. Phasing is 3 Phase per socapex and is indicated by stickers on the outlets. This unit also has an external earthing point. | | |

Type 3124

Style: Rubber box



Type 3126

Style: Rubber box

| | <u>Connection/Type</u> | <u>Quantity</u> | <u>Protection</u> |
|---------|---|-----------------|---|
| Input: | 125A / 3 | 1 | 125A C-Type MCB |
| Output: | 16A/1 | 18 | 16A C-Type RCBO x18 |
| | 32A/1 | 12 | 32A C-Type RCBO x6 32A C-Type MCB & Variable/ Switchable RCD x6 |
| | 32A/3 | 1 | 32A C-Type MCB & Variable/ Switchable RCD |
| | 63A/3 | 1 | 63A C-Type MCB & Variable/ Switchable RCD |
| Through | 125A / 3 | 1 | - |
| Notes | This unit has an external earthing point. | | |

Type 3126

Style: Rubber box



Type 3129

Style: Flight Cased

| | <u>Connection/Type</u> | <u>Quantity</u> | <u>Protection</u> |
|---------|--|-----------------|---------------------------------------|
| Input: | 125A / 3 | 1 | 125A C-type MCCB & Variable RCD |
| Output: | 63A/1 | 1 | 63A B-Type MCB |
| | 16A/1 | 1 | 16A B-Type MCB |
| | 13A/3 | 1 | 16A B-Type MCB |
| | 63A/3 | 3 | 63A B-Type MCB x3 |
| | 32A/3 | 1 | 32A C-Type MCB |
| Notes | This unit has an external earthing point | | |



Type 3P1

Style: HDPE

| | <u>Connection/Type</u> | <u>Quantity</u> | <u>Protection</u> |
|----------|------------------------|-----------------|------------------------------|
| Input: | Powerlock | 1 | - |
| Output: | 125A / 3 | 2 | C-Type MCB & variable RCD x2 |
| | 63A / 3 | 1 | C-Type MCB & variable RCD x1 |
| | 32A / 3 | 2 | C-Type MCB & variable RCD x2 |
| Through: | Powerlock | 1 | - |



Type 3P4

Style: Flightcase

| | <u>Connection/ Type</u> | <u>Quantity</u> | <u>Protection</u> |
|---------|--|-----------------|--|
| Input: | Powerlock | 1 | Variable MCCB |
| Output: | Powerlock | 2 | 200A Variable MCCB with adjustable and switchable Earth Leakage x2 |
| | Powerlock | 1 | 400A Variable MCCB with adjustable and switchable Earth Leakage x1 |
| | 63A / 3 | 3 | 63A C-Type MCB & Variable/ Switchable RCD x3 |
| | 32A / 1 | 1 | 32A C-Type 30mA DP RCBO |
| | 16A / 1 | 1 | 16A C-Type 30mA DP RCBO |
| | 13A | 1 | 13A C-Type 30mA DP RCBO |
| Notes: | Phasing: 13A L1, 16A L2, 32A L3 Also Features 2x USB Sockets for Charging | | |

Type 3P4



Type 3P6

Style: Flightcase

| | <u>Connection/Type</u> | <u>Quantity</u> | <u>Protection</u> |
|---------|--|-----------------|--|
| Input: | Powerlock | 1 | Variable MCCB |
| Output: | Powerlock | 2 | 250A Variable MCCB with adjustable and switchable Earth Leakage x2 |
| | Powerlock | 1 | 400A Variable MCCB with adjustable and switchable Earth Leakage x1 |
| | 32A / 3 | 1 | 32A/3 MCB 30mA RCBO |
| Notes: | Utility Power 1x 32A/1, 1, 13A/1 and 1x True1, all protected with a 30mA RCBO per outlet | | |

Type 3P6



Type 3P6a

Style: Flightcase

| | <u>Connection/Type</u> | <u>Quantity</u> | <u>Protection</u> |
|---------|--|-----------------|--|
| Input: | Powerlock | 1 | Variable MCCB |
| Output: | Powerlock | 2 | 200A Variable MCCB with adjustable and switchable Earth Leakage x2 |
| | Powerlock | 1 | 400A Variable MCCB with adjustable and switchable Earth Leakage x1 |
| | 32A / 3 | 1 | 32A/3 MCB 30mA RCBO |
| Notes: | Utility Power 1x 32A/1, 1x 16A/1 and 1x 13A/1, all protected with a 30mA RCBO per outlet | | |

Type 3P6a



Type 3P7

Style: Flightcase

| | <u>Connection/Type</u> | <u>Quantity</u> | <u>Protection</u> |
|----------|------------------------|-----------------|--|
| Input: | Powerlock | 1 | - |
| Output: | Powerlock | 2 | 400A MCCB with overall variable/switchable RCD |
| Through: | Powerlock | 1 | - |



Type 3P7a

Style: Flightcase

| | <u>Connection/Type</u> | <u>Quantity</u> | <u>Protection</u> |
|----------|---|-----------------|---|
| Input: | Powerlock | 1 | - |
| Output: | Powerlock | 2 | 400A MCCB with Variable/ Switchable RCD |
| Through: | Powerlock | 1 | - |
| Notes | This unit has a External earthing point and is fitted with a Mains Monitoring Protection System (MMPS). | | |



Type 3P8

Style: HDPE

| | <u>Connection/Type</u> | <u>Quantity</u> | <u>Protection</u> |
|----------|------------------------|-----------------|--------------------------------------|
| Input: | Powerlock | 1 | - |
| Output: | 32A / 3 | 12 | C-Type MCB & Variable RCD Per outlet |
| | 63A / 3 | 1 | C-Type MCB & Variable RCD Per outlet |
| Through: | Powerlock | 1 | - |



Type 3P9

Style: HDPE

| | <u>Connection/Type</u> | <u>Quantity</u> | <u>Protection</u> |
|----------|------------------------|-----------------|---|
| Input: | Powerlock | 1 | 400A MCCB & Variable/Switchable RCD |
| Output: | 16A/1 | 6 | 16A C-Type 30mA RCBO x6 |
| | 32A/1 | 6 | 32A C-Type MCB & Variable RCD Per outlet |
| | 32A/3 | 3 | 32A C-Type MCB & Variable RCD Per outlet |
| | 63A/3 | 3 | 63A C-Type MCB & Variable RCD Per outlet |
| | 125A/3 | 4 | 125A C-Type MCB & Variable RCD Per outlet |
| Through: | Powerlock | 1 | - |

Type 3P9

Style: HDPE



Hot Power Soca



Type HP18

Style: Rackmount

| | <u>Connection/Type</u> | <u>Quantity</u> | <u>Protection</u> |
|----------|---|-----------------|----------------------------|
| Input: | 63A / 3 | 1 | - |
| Output: | Socapex | 3 | 30mA 16A C-type RCBO |
| | True1 | 1 | 30mA 16A C-type RCBO x1 |
| Through: | 63A / 3 | 1 | - |
| Notes: | Phasing: 1 Socapex per phase Labelled L1,L2,L3 | | |



Type HP18a

Style: HDPE

| | <u>Connection/Type</u> | <u>Quantity</u> | <u>Protection</u> |
|----------|--|-----------------|-----------------------------|
| Input: | 63A / 3 | 1 | - |
| Output: | Socapex | 3 | 30mA 16A C-type RCBO |
| | True1 | 18 | 30mA 16A C-type RCBO x18 |
| Through: | 63A / 3 | 1 | - |
| Notes: | Phasing: 1 Socapex per phase Labelled L1,L2,L3 Built in metering | | |



Type HP18b

Style: HDPE

| | <u>Connection/Type</u> | <u>Quantity</u> | <u>Protection</u> |
|----------|--|-----------------|-----------------------------|
| Input: | 63A / 3 | 1 | 63A/3 MCB |
| Output: | Socapex | 3 | 16A C-Type 30mA RCBO x18 |
| Through: | 63A / 3 | 1 | 63A MCB |
| Notes: | This unit features an earthing point and has 1 Socapex per phase | | |



Type HP18c

Style: Rubber box

| | <u>Connection/Type</u> | <u>Quantity</u> | <u>Protection</u> |
|----------|--|-----------------|---------------------------------------|
| Input: | 63A / 3 | 1 | 63A/3 C-Type MCB & Variable RCD |
| Output: | Socapex | 3 | 16A C-Type 30mA RCBO x 18 |
| | 16A / 1 | 18 | |
| Through: | 63A / 3 | 1 | - |
| Notes: | The Socapex and 16A outputs are paired across this output. Phasing, of 1 Socapex and 6x 16A/1 per phase, is indicated by stickers on the outlets | | |



Type HP18d

Style: Rackmount

| | <u>Connection/Type</u> | <u>Quantity</u> | <u>Protection</u> |
|----------|--|-----------------|---|
| Input: | 63A / 3 | 1 | - |
| Output: | Socapex | 3 | 30mA RCD per Socapex & C-Type MCB x18 |
| Through: | 63A / 3 | 1 | - |
| Notes: | 1 phase per Socapex, labelled and additional 16A and 13A utility power protected by an overall C-Type MCB | | |



Type HP18e

Style: HDPE

| | <u>Connection/Type</u> | <u>Quantity</u> | <u>Protection</u> |
|----------|---|-----------------|---------------------------------------|
| Input: | 63A / 3 | 1 | 63A/3 C-Type MCB & Variable RCD |
| Output: | Socapex | 3 | 30mA 16A C-type RCBO |
| | True1 | 18 | 30mA 16A C-type RCBO x18 |
| Through: | 63A / 3 | 1 | - |
| Notes: | Phasing: 1 Socapex per phase Labelled L1,L2,L3 Socapex and True1 outputs are paired | | |



Type HP18h

Style: HDPE

| | <u>Connection/Type</u> | <u>Quantity</u> | <u>Protection</u> |
|----------|---|-----------------|-----------------------------|
| Input: | 63A / 3 | 1 | - |
| Output: | Socapex | 3 | 30mA 16A C-type RCBO x18 |
| | 16A/1 | 3 | 30mA 16A C-type RCBO x3 |
| | 32A/3 | 1 | 32A C-Type 30mA RCBO x1 |
| Through: | 63A / 3 | 1 | - |
| Notes: | 1 Socapex per phase Labelled L1,L2,L3 This unit has an external earthing point | | |



Type HP18i

Style: HDPE

| | <u>Connection/Type</u> | <u>Quantity</u> | <u>Protection</u> |
|---------|---|-----------------|-----------------------------|
| Input: | 63A / 3 | 1 | 63A/3 C-Type MCB |
| Output: | Socapex | 3 | 16A C-type 30mA RCBO x18 |
| Notes: | 3 Phase Per Socapex This unit has an external earthing point | | |



Type HP36b

Style: Flightcase

| | <u>Connection/Type</u> | <u>Quantity</u> | <u>Protection</u> |
|---------|---|-----------------|-----------------------------|
| Input: | Powerlock | 1 | - |
| Output: | Socapex | 6 | 16A C-Type 30mA RCBO x36 |
| | 16A / 1 | 1 | 16A C-Type 30mA RCBO x6 |
| | 63A / 3 | 1 | 63A MCB |
| Notes: | Utility power 1x 63A/3 and 1x 16A/1 protected with 63A/3 MCB and 16A RCBO respectively Phasing 2 Socapex per phase, labelled on outputs | | |



Type HP36c

Style: Flightcase

| | <u>Connection/Type</u> | <u>Quantity</u> | <u>Protection</u> |
|----------|---|-----------------|-------------------------|
| Input: | Powerlock | 1 | 400A MCCB |
| Output: | Socapex | 6 | C-Type 30mA RCBO x36 |
| Through: | Powerlock | 1 | - |
| Notes: | Utility power 1x 63A/3 with Variable Earth Leakage MCB and 1x 16A/1 with 30mA RCBO Phasing This unit has 2 Socapex per phase, labelled on the outlets | | |



Type HP36d

Style: Flightcase

| | <u>Connection/Type</u> | <u>Quantity</u> | <u>Protection</u> |
|----------|---|-----------------|-------------------------|
| Input: | Powerlock | 1 | 400A MCCB |
| Output: | Socapex | 6 | C-Type 30mA RCBO x36 |
| Through: | Powerlock | 1 | - |
| Notes: | Utility power 1x 63A/3 with Variable Earth Leakage MCB Phasing This unit has 2 Socapex per phase, labelled on the outlets | | |



Type HP42

Style: Flightcase

| | <u>Connection/T ype</u> | <u>Quantity</u> | <u>Protection</u> |
|----------|---|-----------------|---|
| Input: | Powerlock | 1 | 400A MCCB |
| Output: | Socapex | 7 | 16a C-Type 30ma RCBO x42 |
| | True1 | 6 | 16a C-Type 30ma RCBO x6 Paired with soca 7 |
| | 16A / 1 | 1 | 16a C-Type 30ma RCBO x1 |
| | 32A / 3 | 1 | 32A D-Type MCB Variable/Switchable RCD |
| | 63A / 3 | 1 | 63A C-Type MCB Variable/Switchable RCD |
| Through: | Powerlock | 1 | 200A MCCB Variable/Switchable RCD |
| Notes: | Phasing L1: 6x True1 & 1x 16A labelled 1-7, Socapex 1 & 4 L2: Socapex 2 & 5 L3: Socapex 3 & 6 Also Features 2x USB Sockets for Charging & LED Tape for Illumination | | |

Type HP42



Type HP42a

Style: Flightcase

| | <u>Connection/Type</u> | <u>Quantity</u> | <u>Protection</u> |
|----------|---|-----------------|-------------------------|
| Input: | Powerlock | 1 | - |
| Output: | Socapex | 7 | 30mA 16A C-type RCBO |
| Through: | Powerlock | 1 | - |
| Notes: | Utility Power 1x 32A/3, 6x 16A/1 and 1x13A/1 This unit is wired with 2 Socapex per phase. The utility Socapex and single phase utility outputs are also on L1 | | |



Type HP42d

Style: Flightcase

| | <u>Connection/Type</u> | <u>Quantity</u> | <u>Protection</u> |
|----------|--|-----------------|-------------------------------------|
| Input: | Powerlock | 1 | 250A MCCB with Variable ELR |
| Output: | Socapex | 6 | 16A C-Type 30mA RCBO x36 |
| | 16A/1 | 6 | 16A C-Type 30mA RCBO x6 |
| | 32A/3 | 1 | 32A C-Type MCB with Variable ELR |
| | 63A/3 | 1 | 63A C-Type MCB with Variable ELR |
| Through: | Powerlock | 1 | - |
| Notes: | This unit has an external earthing point Phasing This unit is 3 Phase per Socapex outlet | | |

Type HP42d

Style: Flightcase



Type HP48

Style: Flightcase

| | <u>Connection/Type</u> | <u>Quantity</u> | <u>Protection</u> |
|----------|---|-----------------|-------------------------|
| Input: | Powerlock | 1 | 400A MCCB |
| Output: | Socapex | 8 | 16A C-Type 30mA RCBO |
| | 16A/1 | 6 | 16A C-Type 30mA RCBO |
| | 32A/3 | 2 | 32A C-Type MCB |
| Through: | Powerlock | 1 | - |
| Notes: | This unit is wired as 3 Phase per soca and is Labeled accordingly There is an external earthing point on this unit | | |

Type HP48

Style: Flightcase



Type HP48a

Style: Flightcase

| | <u>Connection/Type</u> | <u>Quantity</u> | <u>Protection</u> |
|----------|---|-----------------|---|
| Input: | Powerlock | 1 | - |
| Output: | Socapex | 8 | 30 mA RCD per Soca supplying 16A C-Type MCB x6 per Socapex |
| | 16A/1 | 6 | 30 mA RCD supplying 16A C-Type MCB x6 |
| | 63A/3 | 1 | 30 mA RCD supplying 63A C-Type MCB |
| Through: | - | - | - |
| Notes: | Phasing This unit is 3 Phase per Socapex | | |

Type HP48a

Style: Flightcase





Type HP72

Style: Flightcase

| | <u>Connection/Type</u> | <u>Quantity</u> | <u>Protection</u> |
|----------|---|-----------------|-------------------------------------|
| Input: | Powerlock | 1 | 400A MCCB |
| Output: | Socapex | 12 | 16A C-Type 30mA RCBO x72 |
| | True1 | 6 | 16A C-Type 30mA RCBO x6 |
| | 32A / 3 | 1 | 32A D-Type MCB with variable ELR |
| | 63A / 3 | 1 | 63A C-Type MCB with variable ELR |
| Through: | Powerlock | 1 | 250A MCCB with variable ELR |
| Notes: | This unit features an Earthing point is wired with 1 Socapex per phase (x4) Also Features 2x USB Sockets for Charging & LED Tape for Illumination | | |

Type HP72



Type HP72a

Style: Flightcase

| | <u>Connection/Type</u> | <u>Quantity</u> | <u>Protection</u> |
|----------|--|-----------------|----------------------------------|
| Input: | Powerlock | 1 | 400A MCCB with variable ELR |
| Output: | Socapex | 12 | 16A C-Type 30mA RCBO x72 |
| | True1 | 6 | 16A C-Type 30mA RCBO x6 |
| | 32A / 3 | 1 | 32A C-Type MCB |
| | 63A / 3 | 1 | 63A C-Type RCD with variable ELR |
| Through: | Powerlock | 1 | 250A MCCB |
| Notes: | This unit features an Earthing point is wired with 1 Socapex per phase (x4) Also Features 2x USB Sockets for Charging & LED Tape for Illumination | | |

Type HP72a



Type HP72b

Style: Flightcase

| | <u>Connection/Type</u> | <u>Quantity</u> | <u>Protection</u> |
|----------|--|-----------------|-----------------------------|
| Input: | Powerlock | 1 | 400A MCCB with variable ELR |
| Output: | Socapex | 12 | 16A C-Type 30mA RCBO x72 |
| | 16a /1 | 6 | 16A C-Type 30mA RCBO x6 |
| | 32A / 3 | 1 | 32A C-Type MCB |
| | 63A / 3 | 1 | 63A C-Type MCB |
| Through: | Powerlock | 1 | - |
| Notes: | This unit features an Earthing point is wired with 1 Socapex per phase (x4) Also Features 2x USB Sockets for Charging & LED Tape for Illumination | | |

Type HP72b



Type HP72c

Style: Flightcase

| | <u>Connection/ Type</u> | <u>Quantity</u> | <u>Protection</u> |
|----------|---|-----------------|-------------------------------|
| Input: | Powerlock | 1 | - |
| Output: | Socapex | 12 | 16A C-Type 30mA RCBO x72 |
| | 16A / 1 | 7 | 16A C-Type 30mA RCBO x7 |
| | Schuko | 1 | 16A C-Type 30mA RCBO x1 |
| | 13A | 1 | 13A C-Type 30mA RCBO x1 |
| | 63A / 3 | 1 | 63a C-Type MCB & Variable ELR |
| | 32A / 3 | 1 | 32a C-Type MCB & Variable ELR |
| Through: | Powerlock | 1 | - |
| Notes: | Phasing: L1: Outputs: 1,4,9 (All 16a) L2: Outputs: 2 (Schuko), 5 (16a), 8 (16a) L3: Outputs, 3 (13a), 6 (16a), 9 (16a) Socapex outputs 4 per phase Also Features 2x USB Sockets for Charging & LED Tape for Illumination | | |

Type HP72c



Type HP72e

Style: Flightcase

| | <u>Connection/Type</u> | <u>Quantity</u> | <u>Protection</u> |
|----------|---|-----------------|----------------------------------|
| Input: | Powerlock | 1 | 400A MCCB with variable ELR |
| Output: | Socapex | 12 | 16A C-Type 30mA RCBO x72 |
| | True1 | 6 | 16A C-Type 30mA RCBO x6 |
| | 32A / 3 | 1 | 32A C-Type MCB |
| | 63A / 3 | 1 | 63A C-Type MCB with variable ELR |
| Through: | Powerlock | 1 | 250A MCCB |
| Notes: | This unit features an Earthing point is wired with 1 Socapex per phase (x4) Also Features 2x USB Sockets and "smart", real-time metering of voltage & current for each circuit on the unit | | |

Type HP72e



Type HP72f

Style: Flightcase

| | <u>Connection/Type</u> | <u>Quantity</u> | <u>Protection</u> |
|----------|--|-----------------|-------------------------------------|
| Input: | Powerlock | 1 | 400A MCCB with Variable ELR |
| Output: | Socapex | 12 | 16A C-Type 30mA RCBO x16 |
| | 16A/1 | 6 | 16A C-Type 30mA RCBO x6 |
| | 32A/3 | 1 | 32A C-Type MCB with variable ELR |
| | 63A/3 | 1 | 63A C-Type MCB with variable ELR |
| | Front Connectors 13A/1, 16A/1, Shuko | 1 | 16A C-Type 30mA RCBO x3 |
| Through: | Powerlock | 1 | - |
| Notes: | This unit has a External earthing point and is fitted with a Mains Monitoring Protection System (MMPS). This unit has 3 Phases per Socapex | | |

Type HP72f

Style: Flightcase



Type HP72g

Style: Flightcase

| | <u>Connection/Type</u> | <u>Quantity</u> | <u>Protection</u> |
|----------|--|-----------------|--|
| Input: | Powerlock | 1 | 400A MCCB + Variable ELR |
| Output: | Socapex | 12 | 16A C-Type 30mA RCBO x72 |
| | 16A/1 | 6 | 16A C-Type 30mA RCBO x6 |
| | 32A/3 | 1 | 32A C-Type MCB with variable ELR n |
| | 63A/3 | 1 | 63A C-Type MCB with variable ELR |
| Through: | Powerlock | 1 | - |
| Notes: | This unit has an external earthing point Phasing This unit is 3 Phases per Socapex | | |

Type HP72g

Style: Flightcase



Hybrid Dimmer-Distro



Type HPD24

Style: Flightcase

| | <u>Connection/Type</u> | <u>Quantity</u> | <u>Protection</u> |
|---------|------------------------|---------------------------|---|
| Input: | Powerlock | 1 | 125A/3 C-Type MCB |
| Output: | Socapex | 8 (24 channels Paired) | Each Dimmer: 63A/3 C-Type MCB Each End Circuits: 16A C-Type 30mA RCBO |
| | 16A / 1 | 1 | 16A C-Type 30mA RCBO |

Type HPD24

Style: Flightcase

| | <u>Connection/Type</u> | <u>Quantity</u> | <u>Protection</u> |
|----------|--|-----------------|-------------------------|
| | 32A / 1 | 1 | 16A C-Type 30mA RCBO |
| | 32A / 3 | 1 | 16A C-Type 30mA RCBO |
| Through: | | | |
| Notes: | Phasing is marked on the dimmers and goes incrementally i.e.. Ch 1 = L1, Ch 2 = L2, Ch 3 = L3, Ch 4 = L1 The Socapex outputs are paired and the unit has an Earthing point. This unit has the ability for any channel to be hot or dimmed. Also Features 2x USB Sockets for Charging | | |

Type HPD24



Type HPD60

Style: Flightcase

| | <u>Connection/Type</u> | <u>Quantity</u> | <u>Protection</u> |
|---------|------------------------|-----------------|----------------------|
| Input: | Powerlock | 1 | Switched |
| Output: | Socapex | 16 | Patchable |
| | 16A / 1 | 4 | |
| | 16A / 1 | 1 | 16A C-Type 30mA RCBO |
| | 32A / 1 | 1 | 32A C-Type 30mA RCBO |
| | 32A / 3 | 1 | 32A C-Type 30mA RCBO |

Type HPD60

Style: Flightcase

| | <u>Connection/Type</u> | <u>Quantity</u> | <u>Protection</u> |
|-------------------|--|-----------------|---|
| Patchable Dimmers | 12 Channels Each | 4 | Each Dimmer: 63A/3 C-Type MCB Each End Circuits: 16A C-Type= 30mA RCBO |
| Patcable Hot | | 12 | 16A C-Type 30mA RCBO |
| Through: | Powerlock | 1 | Switched, with variable RCD |
| Notes: | This unit features an Earthing point and has the ability for any channel to be hot or dimmed with the Socapex and 4x 16A/1 outputs. Phasing is marked on the dimmers and goes incrementally i.e.. Ch 1 = L1, Ch 2 = L2, Ch 3 = L3, Ch 4 = L1 Patchable hot power is 4x L1 followed by 4x L2 and 4x L3 | | |

Type HPD60



Reference Section



Mains Calculations

All calculations are for guidance only and should be used in conjunction with BS7909 guidelines.

| <u>Watts to Amps</u> (at 230V) | | | | |
|-----------------------------------|-------------|--|--------------|-------------|
| <u>Watts</u> | <u>Amps</u> | | <u>Watts</u> | <u>Amps</u> |
| 5 | 0.02 | | 50 | 0.22 |
| 10 | 0.04 | | 100 | 0.43 |
| 15 | 0.07 | | 500 | 2.17 |
| 20 | 0.09 | | 1000 | 4.35 |
| 25 | 0.11 | | 2000 | 8.70 |

Mains Calculations

All calculations are for guidance only and should be used in conjunction with BS7909 guidelines.

| <u>Amps to Watts</u> <u>(at 230V)</u> | |
|--|--------------|
| <u>Amps</u> | <u>Watts</u> |
| 13 | 2990 |
| 16 | 3680 |
| 32 | 7360 |
| 63 | 14,490 |
| 125 | 28,750 |

| <u>Generator KVA Ratings</u> <u>(at 400V, 3-Phase, 50Hz and</u> <u>0.8 power factor)</u> | | |
|---|-----------|-------------|
| <u>kVA</u> | <u>kW</u> | <u>Amps</u> |
| 100 | 80 | 144 |
| 150 | 120 | 217 |
| 200 | 160 | 289 |
| 300 | 240 | 433 |
| 400 | 320 | 577 |

Cable Guide

All calculations are for guidance only and should be used in conjunction with BS7909 guidelines.

| <u>Mains Cable ratings - H07RN-F</u> <u>(based on max Amps in free air)</u> | |
|--|-------------|
| <u>Conductor</u> <u>cross-sectional area</u> <u>(mm²)</u> | <u>Amps</u> |
| 25 | 142 |
| 35 | 162 |
| 50 | 198 |
| 70 | 256 |
| 95 | 314 |
| 120 | 365 |
| 150 | 422 |

| <u>Cable colour coding</u> | |
|-----------------------------------|-------------------|
| 1m | Brown |
| 2m | Blue |
| 3m | White |
| 5m | Green |
| 10m | Yellow |
| 15m | Yellow Green |
| 20m | Red |
| 25m | Red Green |
| 30m | Red Yellow |
| 40m | Grey |
| 50m | Grey Yellow |
| 60m | Grey Red |




Cable Guide

All calculations are for guidance only and should be used in conjunction with BS7909 guidelines.

| <u>Connectors</u> | |
|---|--|
|  | 16A, 32A or 63A single phase (size dependent) |
|  | 16A 4-pin Motor cable (power) |
|  | 16A 4-pin Motor cable (signal) |
|  | 32A, 63A or 125A 3-phase (size dependent) |
|  | Powerlock (in and out) |
|  | Socapex (in and out) |

Cable Guide

All calculations are for guidance only and should be used in conjunction with BS7909 guidelines.

| <u>Connectors</u> | |
|---|------------------------------|
|  | Socapex (in and out) |
|  | Powercon (in and out) |
|  | True1 (in and out) |

Variable RCDs

All standard variable RCDs will be set with the following settings. These devices are often show critical and should be checked by a suitable competent person(s) prior to energising

| <u>Selec 900ELR</u> | | |
|---------------------|-----|--------------------------------|
| | | <u>Rating of circuit</u> |
| | | <u>125A, 400A & Higher</u> |
| RL1 | RNG | 550mA |
| | SV | 300mA |
| | INS | OFF |
| | MOD | OFF |
| | LCH | OFF |

Variable RCDs

All standard variable RCDs will be set with the following settings. These devices are often show critical and should be checked by a suitable competent person(s) prior to energising

Selec 900ELR

| | | | |
|-----|------|------|------|
| TM1 | TRP | 0.1s | 0.3s |
| | REC | 0.1s | 0.3s |
| | P.ON | 0.5s | 0.5s |

Default Password: 753

Variable RCDs

All standard variable RCDs will be set with the following settings. These devices are often show critical and should be checked by a suitable competent person(s) prior to energising

| <u>Hobut RCR-V30/SES ELR600-2</u> | | | |
|-----------------------------------|--------------------------|------------|--------------------------------|
| | <u>Rating of circuit</u> | | |
| | <u>32A</u> | <u>63A</u> | <u>125A, 400A & Higher</u> |
| Trip Current | 100mA | 100mA | 300mA |
| Time Delay | 150mS | 150mS | 250mS |

